

Luminaires with higher degree of protection

# POLEDO2

## Quickinfo

### LUMINAIRE

ceiling, wall  
suspended, surface mounted  
aluminium, white  
IP65, IK10



### LED

3000K, 4000K  
CRI>80  
initial MacAdam 3 SDCM  
50.000h L80

### LIGHT DISTRIBUTION



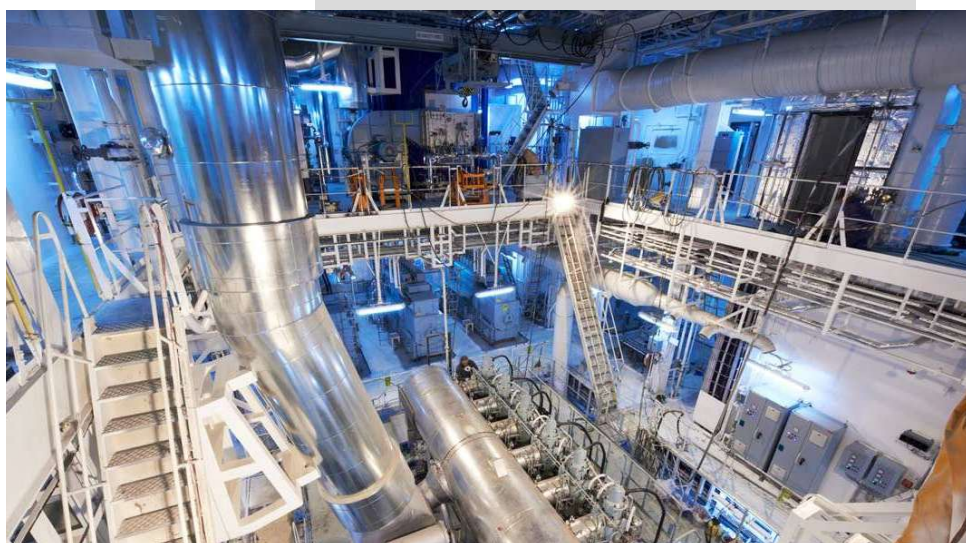
### ELECTRIC

ON-OFF  
DALI2 dim  
Emergency 3h



## Description

High-Performance tri-proof light luminaire for demanding environments. This durable luminaire is designed for high efficiency and reliability in challenging conditions. The housing, made from impact-resistant polycarbonate and aluminum, is maintenance-free and easy to clean. Dimensionally stable seals provide dependable protection against moisture and dust ingress. Equipped with high-efficiency LEDs and a precision lens system, the luminaire ensures uniform and effective light distribution. The MULTILUMEN function allows flexible adjustment of light output to suit various applications. Featuring EASY CONNECT interfaces at both ends and integrated through-wiring (5x2.5 mm<sup>2</sup>) the luminaire enables fast and straightforward installation—ideal for modern, scalable lighting systems.



## Easy Connect

For easy connection

## EB Multilumen



**One luminaire, different luminous intensities**  
Power levels can be easily adjusted using a DIP switch.

## Through-wiring



Incl. 5x2,5mm<sup>2</sup> through-wiring



## Types

PRODUCT CODE	POWER	LUMINOUS FLUX	LIGHT DISTRIBUTION	COLOUR TEMP.	LENGHT	WEIGHT
FRP2035.3A422.K.1	7-32W	910 - 4.160lm	OPAL 120°	4.000K	685mm	1,7kg
FRP2040.3A422.K.1	10-44W	1.600 - 7.040m		3.000K 4.000K	1.255mm	2,7kg
FRP2071.XAX22.1	35-70W	5.600 - 11.076lm			1.540mm	3kg

.IX - X --  
1 2

1 Control  
1... ON-OFF switchable  
2... DALI dim  
8... emergency 3h 10W

2 Colour temp.  
3... 3000K  
4... 4000K

, Applicable for ON-OFF switchable control  
\*excl. emergency function

... K.1  
including climate membrane

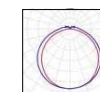
## Light distribution



MEDIUM 60°



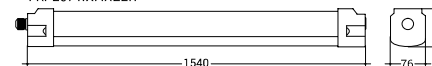
WIDE 90°



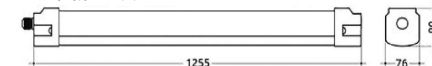
OPAL 120°

## Dimensions

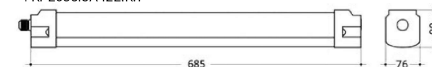
FRP2071.XAX22.1



FRP2040.3A422.K.1



FRP2035.3A422.K.1



## Accessories

	PRODUCT CODE	DESCRIPTION
	LBCLZB010	Cable suspension kit 2m, Set of 2pcs
	LBCLZB020	Chain suspension kit 2m, Set of 2pcs
	LBCLZB021	Chain holder mounting kit for installation with existing chain suspension, Set of 2pcs
	FRMSZB030	Mounting bracket swivelling, Set of 2pcs